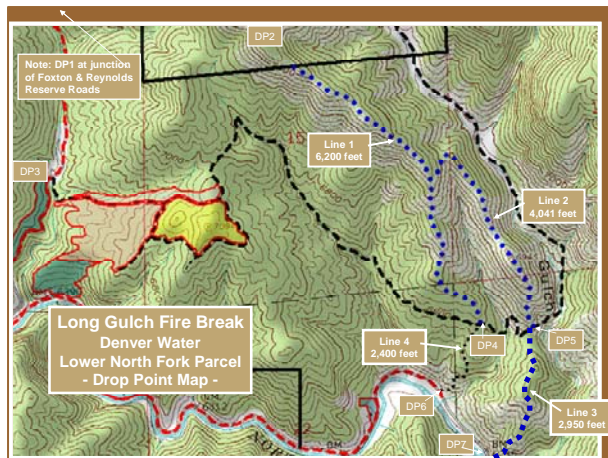


LOWER NORTH FORK FUELS MANAGEMENT PROJECT LONG GULCH FIREBREAK CORRECTIONAL INDUSTRIES FIRE CREW

**A COLLABORATIVE PROJECT TO HELP PROTECT FRONT RANGE FORESTS,
WATERSHEDS AND COMMUNITIES FROM WILDFIRE**

A Piece of the Puzzle

The Long Gulch Firebreak Project is one part of a larger, comprehensive fuels treatment plan for Denver Water's properties in the Lower North Fork. It is a key element and driving force behind the Lower North Fork CWPP, which is being developed and implemented by the Colorado State Forest Service, Denver Water, USDA Forest Service, Jefferson County Open Space, Jefferson County Office of Emergency Management and the North Fork Fire Protection District.



Purpose of the Project

The purpose of the Long Gulch Firebreak Project is to establish a permanent fireline on the Lower North Fork parcel of Denver Water land to assist with wildfire suppression efforts and to provide holding line for future prescribed fire projects. This project also provided an opportunity for the State Wildfire Inmate Fire Teams (SWIFT) and Colorado State Forest Service employees to prepare for future fire seasons.

Line Construction Standards

- Aerial clearance: 20 feet
- Brush Clearance: 12 feet
- Line width: 4 feet
- Prune trees immediately adjacent to clearing area to a height of 7 feet
- Line to mineral soil
- Utilize natural barriers, where possible
- Install waterbars and drainage as needed
- Distribute and scatter logs and slash well outside the clearing area and line
- Orient logs up and down slope to prevent rolling
- Buck logs to lay flat on the ground
- Lop-and-scatter slash to a height of 12" or less
- Leave stumps that are 6" or less in height



SWIFT crews from the Buena Vista Correctional Center, Four-Mile Correctional Center and Rifle Correctional Center not only performed the grueling handwork necessary to create the firebreak on the Lower North Fork, they also are qualified to serve as Type 2 hand-crew members.

Project Size

Approximately 15,600 feet of permanent firebreak was created as a result of this phase of the Lower North Fork Fuels Management Project.



Project location: The Lower North Fork parcel is located southeast of Conifer, approximately 40 miles from Denver.

Number of People Involved

Three Type 2 Hand Crews comprised of approximately 60 people, and approximately 15 overhead personnel were involved in project implementation.

Agencies and Organizations Involved

Project Partners:

Colorado State Forest Service—overall project coordination, overhead positions

Colorado Correctional Industries—provided three hand crews and support staff

Denver Water—project was implemented on their land

Denver Mountain Parks—provided access to Newton Park (Incident Command Post location)

Front Range Fuels Treatment Partnership—pre-event communications and media relations coordination

Other Participants:

American Red Cross—advised Colorado Baptist General Convention

Colorado Baptist General Convention—meal support for crews/overhead

Elk Creek Fire Protection District—EMS support

Jefferson County Amateur Radio Emergency Service (ARES)—communications support

North Fork Fire Protection District—project planning

Salvation Army—advised Colorado Baptist General Convention

Definitions

Firebreak—A natural or constructed barrier used to stop or check a wildfire’s spread or to provide a control line from which to work. A strip of land that is 20-30 feet wide (or more), in which all vegetation is removed down to bare mineral soil each year prior to fire season.

Fuelbreak—An easily accessible strip of land of varying width (depending on fuel and terrain), in which fuel density is reduced, thus improving fire control opportunities. The stand is thinned and remaining trees are pruned to remove ladder fuels and create an open, park-like appearance.

